



Giant's Head Regatta
 Aug 6-7, 2022
 Summerland, BC, Canada
SAILING INSTRUCTIONS

Supplement to the STANDARD SAILING INSTRUCTIONS (SSI).

1 Rules

- 1.1 [DP] RRS 77 is changed as follows: - Boats must display correct Sail numbers on their Main Sails. Boats failing to do so may be scored DNS.
- 1.2 Boats must comply with the Canadian Coast Guard Small Vessel Regulations pertaining to minimum safety equipment on board.
- 1.3 For all the class(es), RRS 44.1 is changed so that the Two-Turns Penalty is replaced by the One-Turn Penalty.

2 Signals Made Ashore

- 2.1 The race office is located at 13209 Lakeshore Dr. S., Summerland, BC V0H 1Z1, telephone 250-494-8312, emailadmin@summerlandyachtclub.com.
- 2.2 Notices to competitors will be posted on the official regatta notice board located in the Clubhouse foyer.
- 2.3 Signals made ashore will be displayed at the access gate to the docks and announced by 3 short horn blasts.
- 2.4 When flag AP is displayed ashore, '1 minute' is replaced with 'not less than 45 minutes' in Race Signals AP.

3 Schedule of Races

3.1 Dates of Racing

Dates	Fleets	Races	Type of Race
Sat Aug 6, 2022	All	3	Distance
Sun Aug 7, 2022	All	3	Distance

- 3.2 The scheduled time of the warning signal for the first race of each day is 0900.
- 3.3 The latest time each day for a warning signal is **1200**.

4 Class Flags

4.1 The class flags colours are as follows:

A Fleet	yellow
B Fleet	orange
C Fleet	blue
D Fleet	white

5 Courses

- 5.1 The courses are shown on diagram(s) ADENDA "A" – RACING AREAS RATTLESNAKE ISLAND COURSE and SUNDAY COURSE.
- 5.2 The courses for 3 races on Sat, Aug 6 are:

Fleet	Race Number	Start	Finish
A, B, C	1	SYC Start/Finish	Rattlesnake Island
A, B, C	2	Rattlesnake Island	SYC Start/Finish
A, B, C	3 (overall time from 1 and 2)	SYC Start/Finish	SYC Start/Finish
D	1	SYC Start/Finish to Squally Point & return	SYC Start/Finish

- 5.3 The courses for 3 races on Sun, Aug 7 are planned as follows:

If North Start, Starboard Rounding

Fleet	Race Number	Start	Finish
A, B, C	1	SYC Start/Finish to D mark then C mark	B mark
A, B, C	2	B mark to A mark	SYC Start/Finish
A, B, C	3 (overall time from 1 and 2)	SYC Start/Finish	SYC Start/Finish
D	1	SYC Start/Finish to B mark	SYC Start/Finish

The Race Committee boat will display this race course as D-C-B-A, and may adjust the course depending on the wind direction or wind strength.

If South Start, Port Rounding

Fleet	Race Number	Start	Finish
A, B, C	1	SYC Start/Finish to A mark	B Mark
A, B, C	2	B Mark to C mark then to D mark	SYC Start/Finish
A, B, C	3 (overall time from 1 and 2)	SYC Start/Finish	SYC Start/Finish
D	1	SYC Start/Finish to B Mark	SYC Start/Finish

The Race Committee boat will display this race course as A-B-C-D, and may adjust the course depending on the wind direction or wind strength.

6 Marks

- 6.1 Marks are described on ADDENDA "A" – RACING AREAS
- 6.2 The following marks are rounding marks:
- *Rattlesnake Island*, which shall be rounded by passing in a 'DOWNWIND' direction when passing between the island and the mainland.
 - **D Fleet** must pass *Squally Point* by sailing within 3 boat lengths (30 metres) from the lighthouse.
 - *PYC 'Start-Finish'* must be passed by sailing in a Southerly direction between the gate created by the East and West marks.

All other marks, if identified in the Course, shall be rounded to port.

- 6.3 Marks are described on the racing areas in Addenda A are approximately located as follows:

Start-Finish	49 degr, 35.813'N	119 degr, 38.443'W
A Mark	49 degr, 33.621'N	119 degr, 36.524'W
B Mark	49 degr, 35.809'N	119 degr, 36.751'W
C Mark	49 degr, 37.118'N	119 degr, 37.073'W
D Mark	49 degr, 37.437'N	119 degr, 39.126'W

- 6.4 The channel between Rattlesnake Island and the mainland to the East is designated as an obstruction and must be transited by sailing downwind.

7 The Start

- 7.1 The starting line is between an orange buoy to the East and the mast on the signal vessel.
- 7.2 Fleet starting order shall be C, B, A, D
- 7.3 Fleet may be combined for starting.
- 7.4 Race Committee Signals, the *Start* signal for a fleet may coincide with the '5 minute preparatory' fleet signal for the next fleet (rolling start),.
- 7.5 Boats whose warning signal has not been made shall avoid the starting area during the starting sequence for other races. The RC boat, at its discretion, may penalize the offending boat by scoring a DNS.
- 7.6 If any part of a boat's hull is on the course side of the starting line before her starting signal and she is identified, the race committee will attempt to broadcast her sail number on VHF channel 68. Failure to make a broadcast or to time it accurately will not be grounds for a request for redress. This changes RRS 62.1(a).
- 7.7 A boat that does not start within 5 minutes after her starting signal will be scored Did Not Start without a hearing. This changes RRS A5.1 and A5.2.
- 7.8 In the case of a downwind *Start* Boats must be completely across the *Start* line before hoisting a spinnaker. Boats hoisting their spinnakers prior shall be identified as OCS receive an 'individual recall and scored accordingly.
- 7.9 If no timing facility is present upon reaching the Race 1 Finish Mark, a boat in Fleet A, B, or C should take its time at such Mark, so this may be used as its Start time of Race 2. It shall notify the RC of this action and time at the earliest reasonable opportunity.

8 The Finish

- 8.1 The finishing line is between an orange buoy to the East and the mast on the signal vessel. Should the vessel be absent it is the buoy to which it was attached at the 'start'. This changes RS Appendix S 11.1
- 8.2 If the race committee is absent when a boat finishes any race, she shall report her finishing time (hr/min/sec), and her position in relation to nearby boats, to the race committee at the first reasonable opportunity.

- 8.3 A boat in Fleet A, B, or C may motor to Rattlesnake Island (Saturday) or PYC Start-Finish (Sunday) to start Race 2 but shall then be scored NSC for Races 1 and 3 on the day in question. It shall notify the RC of this action.
- 8.4 [DP] A boat that retires from a race shall notify the race committee at the first reasonable opportunity.
- 8.5 Handicap Classes will race under the BC Sailing PHRF rating Time on Time system (A=650, B=550).

9 Time Limits

9.1 The overall time limits are shown in the tables below.

Saturday, August 6, 2022

The Rattle Snake Island timing team will remain in place no later than 14:00.

FLEET	RACE	MARK	TIME LIMIT
A, B, C	1	Rattlesnake Island	8 hrs 30 min
A, B, C	2	SYC Finish	8 hrs 30 min
A, B, C	3	SYC Finish	8 hrs 30 min
D	1	SYC Finish	8 hrs 30 min

Sunday, August 7, 2022

The B Mark timing team will remain in place no later than 3 hours after the start time.

FLEET	RACE	MARK	TIME LIMIT
A, B, C	1	B Mark	3 hrs
A, B, C	2	SYC Finish	6 hrs
A, B, C	3	SYC Finish	6 hrs
D	1	SYC Finish	6 hrs

Safety Information

Based on the nature and severity of any emergency, the boat may contact:

- Race Officer of the Day – Danny Kupowski 778 214-4682
- Race Committee- Channel 68 (working channel)
- Emergency – call 911

Official Vessels

Official vessels will be identified as follows: Flying an RC flag.

Trash Disposal

Protect our environment. Please bring it ashore.

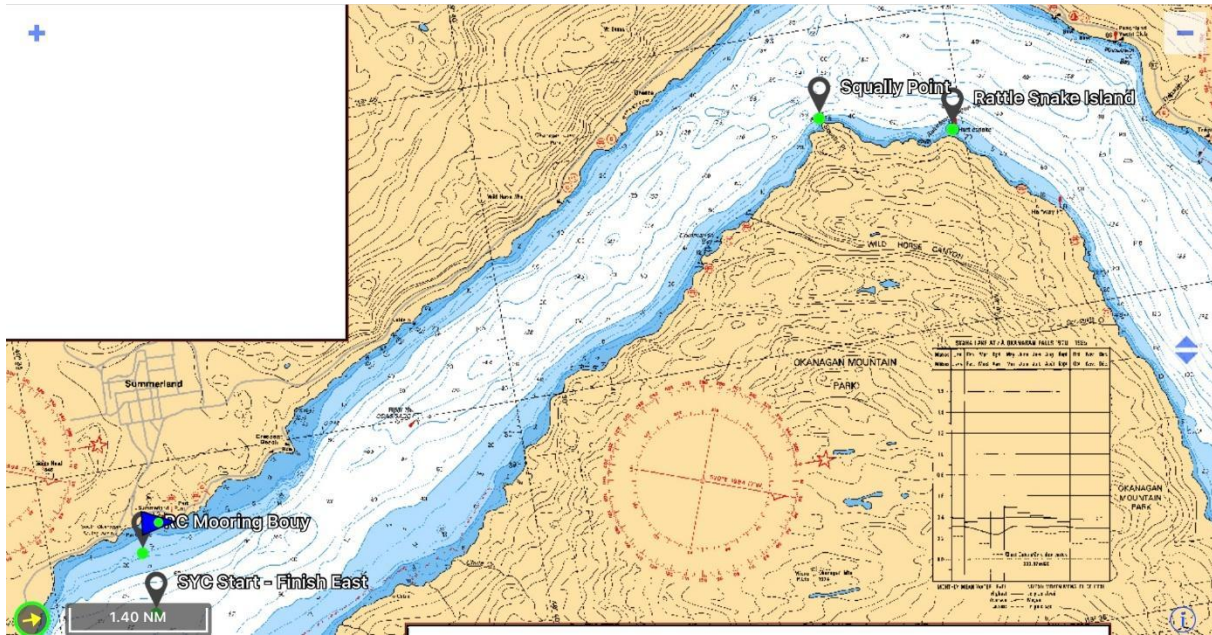


SALES
COACHING
RIGGING
FURLING SYSTEMS
DECK LAYOUT

Alan Barnes 250-486-5766
alan@nauticalssailingservices.com
www.nauticalssailingservices.com

Appendix A - Racing Areas

Saturday (Rattlesnake Island) Course



Sunday Course

